

# Paula Frassinetti School of Education

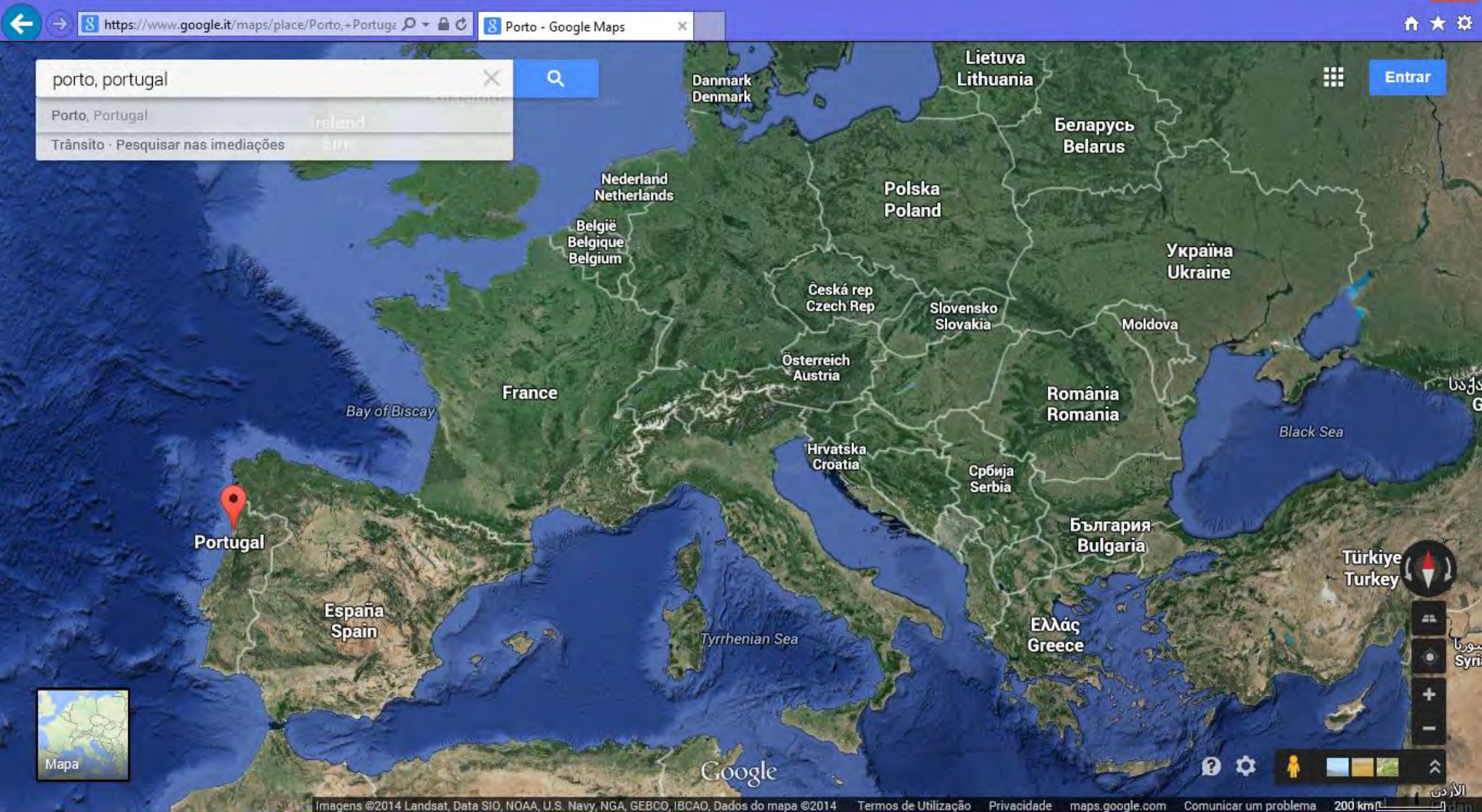
Porto –Portugal

[www.esepf.pt](http://www.esepf.pt)

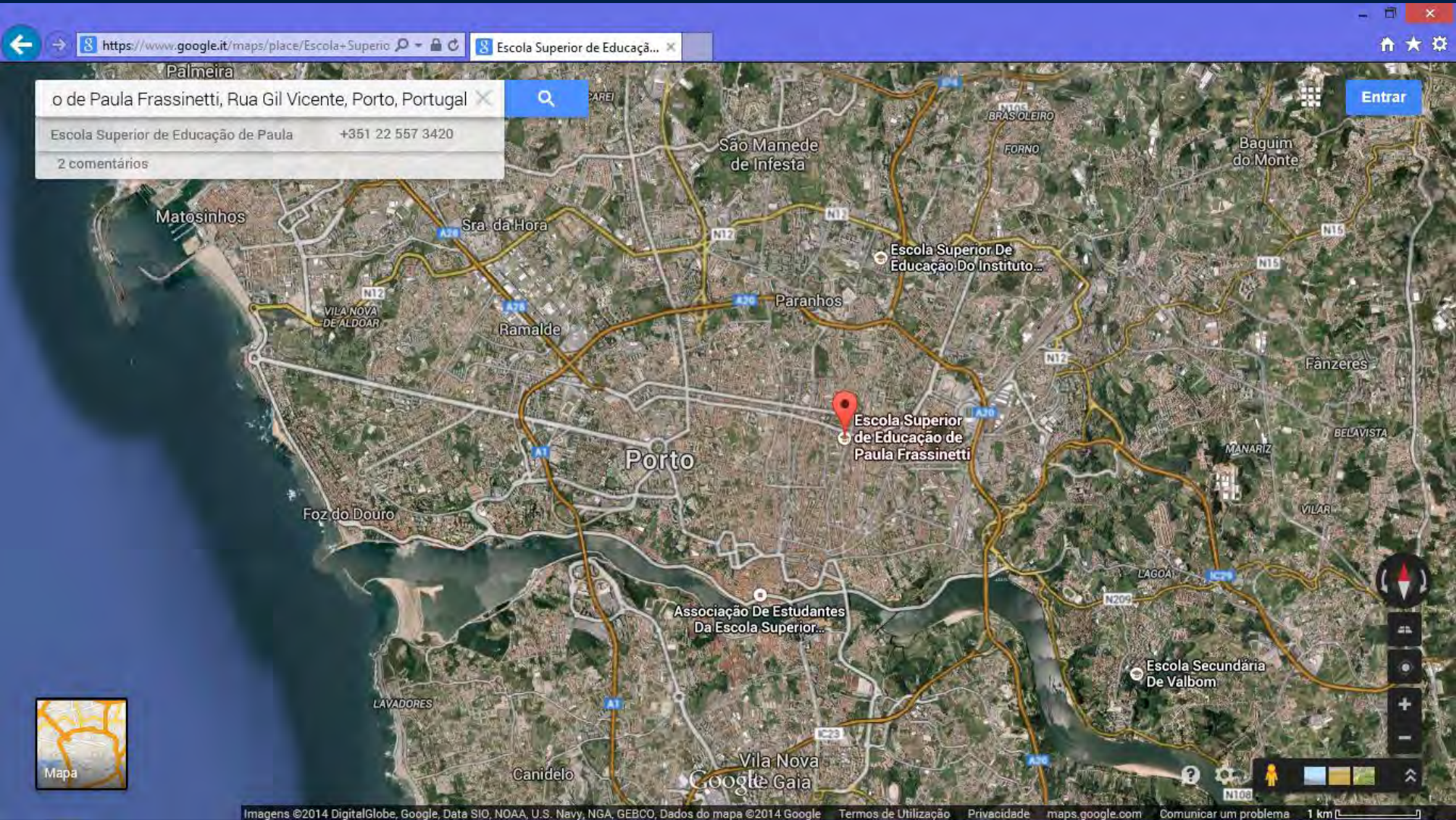
Brigite Silva (PhD)

Ivone Neves (Msc)

Miguel Prata Gomes (PhD) [mpratagomes@gmail.com](mailto:mpratagomes@gmail.com)







o de Paula Frassinetti, Rua Gil Vicente, Porto, Portugal

Escola Superior de Educação de Paula +351 22 557 3420

2 comentários

Escola Superior de Educação Do Instituto...

Escola Superior de Educação de Paula Frassinetti

Associação De Estudantes Da Escola Superior...

Escola Secundária De Valbom

Imagens ©2014 DigitalGlobe, Google, Data SIO, NOAA, U.S. Navy, NGA, GEBCO, Dados do mapa ©2014 Google

Termos de Utilização Privacidade maps.google.com Comunicar um problema 1 km

**Since 1963** (first official degree on Pre-School Education in the north of Portugal)

### **Undergraduate Studies**

- **Basic ducation**
- **Social Education**

### **Master Courses on Sciences of Education (Teacher Training)**

- **Pre-School**
- **Pre-School and Primary School (1st level)**
- **Primary School (1st and 2nd level)**

## **Master Courses on Sciences of Education**

- **Special Needs Education**
- **Pedagogical Supervision**
- **Literary Development**

## **Master Course on Social Sciences**

- **Social Intervention**
  - Social risk environments
  - Health education
  - Active elderly

## **Post Graduations**

- **Special Needs Education (early intervention)**
- **Special Needs Education (moving difficulties)**
- **Socioeducational intervention in social risks environments**
- **Psychology of education**
- **Pedagogical Supervision**
- **ICT and Educational Resources**
- **Libraries Development**
- **Crèche Education and Care**
- **Learning in Family Spaces**



## **National and International relations and Research**

- ✓ **Partnerships with Universities**
- ✓ **Partnerships with dozens of Crèches, Pre-Schools and Primary Schools**
- ✓ **Partnerships with civil and state organizations (stakeholders in Portugal, Brasil, Mozambique, Angola, East Timor...)**

## **Focus on applied research (social extension)**

- **Better education practices (didactics and inclusion)**
- **ICT in education**
- **Intercultural and ethical development**
- **Social intervention**

## Research and activities at Paula Frassinetti School of Education directly related with the issue of the projet EQUAP

### Projects:

- **School-Family: developing and building relations. Case study of Junqueira Schools (Vila do Conde)** –partnership with the Municipality Vila do Conde  
[training for teachers to cooperate with families; design of projects for families intervention in schools; training of staff and stakeholders]
- **Port of support to the families (Porto)** –partnership with the Municipality of Porto  
[technical support and training to the “family intervention teams” of **ALL** the Pre-Schools of Porto]



## Activities:

- **Promotion of relations between family members.** – Association of Holy Paula Frassinetti (Alumni)
- **Master Course Seminars** –Semestral mandatory seminars for all “teacher training courses” about Parental involvement. – colaboration with cooperant teachers of partner schools presenting good practices.

**And much more... including all the great things that we will do with our project EQUAP!!!!**

**And with the help of Ronaldo... we will do a great job!!!**



# Paula Frassinetti School of Education

Porto –Portugal

[www.esepf.pt](http://www.esepf.pt)

Brigite Silva (PhD)

Ivone Neves (Msc)

Miguel Prata Gomes (PhD) [mpratagomes@gmail.com](mailto:mpratagomes@gmail.com)